



- Curved surface, ergonomic design, supports your hand when writing

SILVERTEC mobile flipchart

Silver colored coating

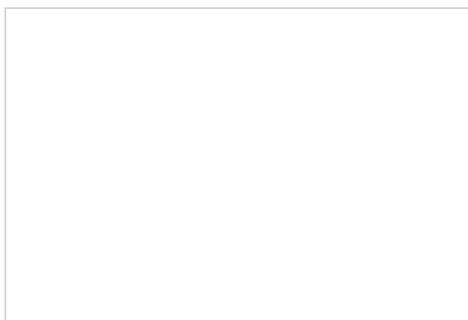
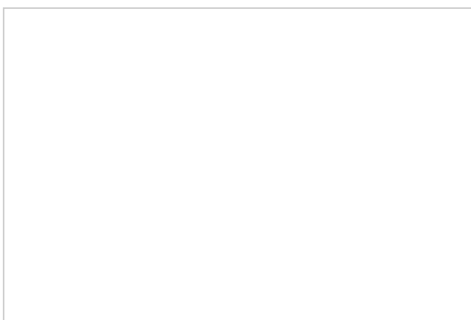
- Metal flipchart with a high quality silver coloured coating
- Star base and five lockable castors ensure easy mobility
- One integrated extendable side arm, magnetic; can be used on the left or the right
- Suitable for paper roll and also adjustable to suit all major standard paper pad formats
- Paper clamp with integrated marker tray
- Easily height adjustable
- Height adjustable from approx. 170 cm to 210 cm
- Board size: H 103 x W 70 cm
- Comes complete with paper roll (35 cm) and presentation marker

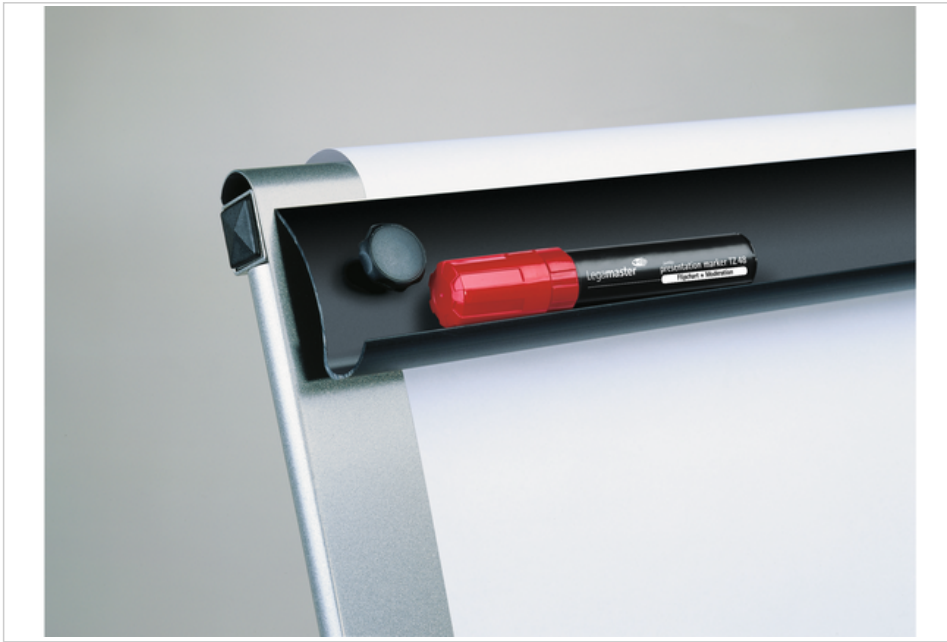
Recommended accessories

- Paper roll for SILVERTEC mobile
Ref.:7-156900
- Presentation marker JUMBO TZ 48
Ref.:7-155594
- Presentation marker TZ 41
Ref.:7-155094

Ref.: **7-151000**

EAN: **8713797060417**





Product specifications

| | |
|---------------------------|--|
| Marker tray material | Aluminium |
| Marker tray length | 690 mm |
| Surface (material/colour) | Lacquered steel / Silver grey |
| Ergonomic design | Yes |
| Product dimensions | W: 700 x H: 1030 (mm) |
| Total height (min/max) | 1030 / 2100 (mm) |
| Number of castors | 5 |
| Floor space diameter | 700 mm |
| Included accessories | Presentation marker, Flipchart paper pad |
| Base | Round |
| Base material | Steel |
| Pad holder | Yes |
| Pad holder material | Steel |
| Paper blocks | Yes |
| Surface warranty | 2 years |

Product logistics

| | |
|-------------------------|--------------------------------------|
| Product SAP / EAN / KEA | 866908000 / 8713797060417 / 7-151000 |
| Packing Unit | Piece |
| Quantity | 1 |
| Packing dimensions | W: 780 x H: 1145 x D: 155 () |
| Weight (gross/net) | 24.25 kg / 19.00 kg |