

PRODUCT SHORT DESCRIPTION:

Earth-It Ceramic Board Aluminium Frame

FEATURES AND BENEFITS:

- Professional and Ecological Earth-It Enamel Board Aluminium Frame
- Contains over 57% post consumer and post industrial waste material
- Ceramic surface complies with EN14864
- High performance ceramic surface ideal for intensive use
- Combines durability, superior visibility, exceptionally smooth writing / erasing and scratch resistance
- Pen tray and wall fastening kit included
- Vertical or horizontal mounting
- 25 years warranty on board surface
- 100% aluminium post-consumer and post-industrial waste material / 98% recyclable / e3 certified environmental ceramic steel / PEFC certified product

PHOTOGRAPHY AVAILABLE:



MARKETING COPY:

Giving preference to recycled and recyclable materials in its manufacture, Bi-Office Earth-It! products combine fine quality with a responsive approach on the environmental issues our planet is now facing. In our pursuit for excellence we match our office and communication solutions with the highest standards in sustainable development.

Answering to the contemporary need of finding sustainable options for the continued development of our consumer needs, Bi-Office products are offered in ecologically concerned formats. Our Earth-It! presentation boards provide our customers with the best performance and professional quality, from recycled and recyclable materials.

APPLICATION AND SALES PROPOSITION:

TARGET MARKET:

CHANNEL: Office products wholesalers, office products stores, decoration products wholesalers, decoration stores and other retailers

END USERS: conference centers, hotels, companies and organizations in general

ADDITIONAL NOTES:

Other information supports: our official websites, Youtube®, Facebook®, catalogue and online catalogue, demo videos and more.

PROMOTIONAL TIPS:

No specific timing, thus we recommend the occasional promotion like product and offering of cleaning kits or markers

RANGING TABLE:

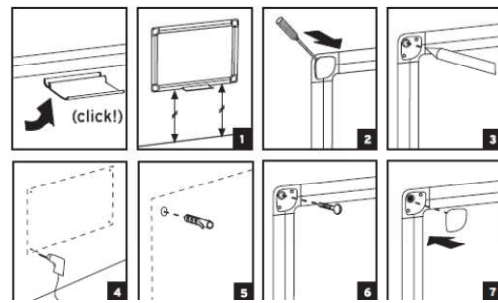
| Frame/Colour: | Surface/Colour: | Product Size: | Packed mm | N.W. kg | G.W. kg | Reference: | RRP: |
|----------------|---------------------|---------------|--------------|---------|---------|------------|------|
| Grey aluminium | White ceramic steel | 600x450 | 730x470x22 | 1,91 | 2,48 | CR0420790 | --- |
| Grey aluminium | White ceramic steel | 900x600 | 1030x620x25 | 3,64 | 4,67 | CR0620790 | --- |
| Grey aluminium | White ceramic steel | 1200x900 | 1330x920x25 | 7,00 | 8,94 | CR0820790 | --- |
| Grey aluminium | White ceramic steel | 1500x1000 | 1650x1050x25 | 9,60 | 12,19 | CR0920790 | --- |
| Grey aluminium | White ceramic steel | 1500x1200 | 1650x1260x25 | 11,43 | 14,53 | CR1020790 | --- |

RANGING TABLE:

| Frame/Colour: | Surface/Colour: | Product Size: | Packed mm | N.W. kg | G.W. kg | Reference: | RRP: |
|----------------|---------------------|---------------|--------------|---------|---------|------------|------|
| Grey aluminium | White ceramic steel | 1800x900 | 2000x940x25 | 10,37 | 13,11 | CR1120790 | --- |
| Grey aluminium | White ceramic steel | 1800x1200 | 2000x1260x25 | 13,64 | 17,28 | CR1220790 | --- |
| Grey aluminium | White ceramic steel | 2000x1000 | 2200x1050x25 | 12,70 | 16,04 | CR1320790 | --- |
| Grey aluminium | White ceramic steel | 2000x1200 | 2200x1250x25 | 13,60 | 17,50 | CR1420790 | --- |
| Grey aluminium | White ceramic steel | 2400x1200 | 2590x1260x25 | 18,07 | 22,77 | CR1520790 | --- |

TECHNICAL DETAILS**COMPOSITION:**

- Aluminum frame
- Wooden based core with white ceramic steel surface
- 25 year warranty

ASSEMBLY OVERVIEW:**CERTIFICATION AND LEGISLATION:**

Ceramic surface complies with EN14864

ILUSTRATION:

SUGGESTED ADVERT:**Earth-It Ceramic Board****Earth-It Ceramic Board Aluminium Frame**

- Professional and Ecological Earth-It Enamel Board Aluminium Frame
- Contains over 57% post consumer and post industrial waste material
- Ceramic surface complies with EN14864
- High performance ceramic surface ideal for intensive use
- Combines durability, superior visibility, exceptionally smooth writing / erasing and scratch resistance
- Pen tray and wall fastening kit included
- Vertical or horizontal mounting
- 25 years warranty on board surface
- 100% aluminium post-consumer and post-industrial waste material / 98% recyclable / e3 certified environmental ceramic steel / PEFC certified product

**WITHIN FAMILY:**

- Earth-it ceramic board
- Earth-it white boards with wood frame
- Earth-it cork boards
- Earth-it revolving board and easels

QR CODE:

Revision: 00/ 28-08-2013