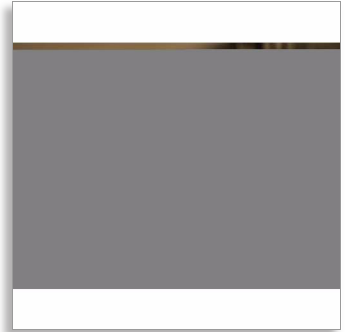




Philips LED  
Candle

5.5W (40W)  
E14  
Warm white  
Non-dimmable



8718696474983



Warm white light, no compromise on light quality

Create a warm, inviting ambiance

Philips LED candles provide a beautiful, warm white light, an exceptionally long life and immediate, significant energy savings. With a pure and elegant design, this light bulb is the perfect replacement for your incandescent candles

**Choose for high quality light**

- True incandescent-like warm white light
- Learn about light

**Choose a simple replacement for your old bulbs**

- Similar shape and size as halogen candle
- Instant light when switched on
- No UV or InfraRed

**Choose for a sustainable solution**

- Long life bulbs - Lasts up to 15 years
- Better for your wallet and your planet

**Create the right light for your home**

- Perfect for decorative fixtures

**PHILIPS**

Candle  
5.5W (40W) E14, Warm white, Non-dimmable

8718696474983

# Highlights

## Incandescent-like warm white



This bulb has a color temperature of 2700K, providing you with a warm, tranquil atmosphere, perfect for relaxing. This 2700K light is ideal for home lighting design

## Replaces candle halogen



With its beautifully shaped design and familiar dimensions, this is a modern lighting, energy-saving standard LED candle. The perfect sustainable replacement for traditional halogen candles.

## Instant On



No need to wait: Philips LED light bulbs provide their full level of brightness immediately they are switched on. Just by turning the switch, your room is at full

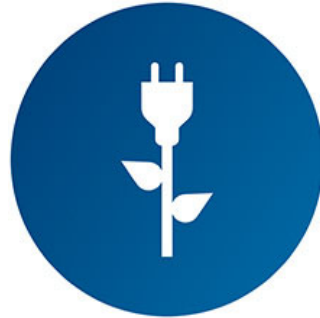
brightness. There is no slow starting or waiting.

## 15,000-hour rated average life



With a lifetime of up to 15,000 hours, you can reduce the hassle of frequently replacing your light bulbs, and enjoy a perfect lighting solution for over 15 years.

## Saves up to 80% energy



LED technology saves up to 80% energy compared to your standard bulb. It therefore pays for itself and saves you money year after year. It also helps protect the environment.

## Perfect for decorative fixture



Modern lighting in Philips LED candles for use in decorative fixtures such as in chandeliers, ceiling fans, vanity strips, and post lights.

## No UV or IR



The light has no infra-red component, so no heat is radiated. Also, there is no ultra-violet component in this light. These two characteristics mean that this light will not cause fabric and other items to fade.

## Learn about light



Color temperature: light can have different color temperatures, indicated in units called Kelvin (K). Bulbs with a low Kelvin value produce a warm, more tranquil light, while those with a higher Kelvin value produce a cool, more energizing light. CRI: the color rendering index (CRI) is used to describe the effect of a light source on color appearance. Natural sunlight has a CRI of 100. The CRI of Philips LED light bulbs is always higher than 80, which ensures colors are shown as true and natural.

Candle  
5.5W (40W) E14, Warm white, Non-dimmable

8718696474983

# Specifications

## Bulb characteristics

- Shape: Candle
- Cap/fitting: E14
- Dimmable: No
- Voltage: 220 - 240 V
- Wattage: 5.5 W
- Wattage equivalent: 40 W

## Power consumption

- Energy efficiency label: A+
- Power consumption per 1000h: 6 kW h

## Light characteristics

- Light output: 470 lumen
- Color: Warm White
- Color temperature: 2700 K
- Light effect/finish: Warm White
- Color rendering index (CRI): 80
- Starting time: <0.5 s
- Warm-up time to 60% light: Instant full light
- Application: Comfortable light
- EyeComfort: Eye Comfort

## Durability

- Lifetime of lamp: 15000 hour(s)
- Number of switch cycles: 50000
- Lumen maintenance factor: 0.7
- Average life (at 2.7 hrs/day): 15 year(s)

## Bulb dimensions

- Height: 106 mm
- Width: 35 mm

## Other characteristics

- Mercury content: 0 mg
- Power factor: 0.5
- Lamp current: 50 mA
- Lamp Classification Risk Group: RG0

## Rated values

- Rated power: 5.5 W
- Rated luminous flux: 470 lumen
- Rated lifetime: 15000 hour(s)



Issue date 2017-11-08

Version: 6.1.1

12 NC: 9290 011 57790  
EAN: 87 18696 47498 3

© 2017 Philips Lighting Holding B.V.  
All Rights reserved.

Specifications are subject to change without notice.  
Trademarks are the property of Philips Lighting Holding B.V. or their respective owners.

[www.philips.com](http://www.philips.com)